



P.O. Box 217, 773 Hwy 105, Palmer Lake, CO 80133

Phone: **719-481-4205**

Fax: 719-488-0872

Email: **sales@diacut.com**

Web: **www.diacut.com**

3"

Diameter Series



RESIN BOND Diamond and CBN

SLOTTING • SLICING • DICING • CUT OFF

OUTSIDE DIAMETER: 3" INSIDE DIAMETER: 1.75"

Thinwheels available in thickness from .004" - .250" in increments of .001" or a fraction thereof.

Thickness Tolerance: Standard $+.0/-0.0004$ Special $+.0/-0.0002$

SUPERABRASIVE SOLID TO HOLE

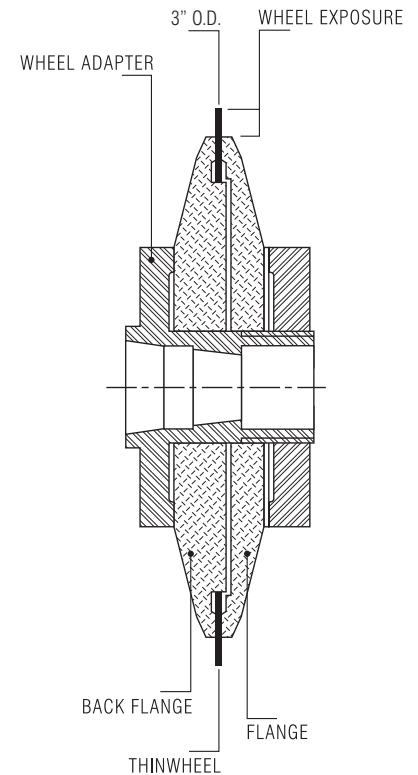
Wheel Thickness	Tolerance	Diamond	CBN
.004"-.006"	Special	\$133.00	NA
.007"-.009"	Standard	\$118.00	\$128.00
	Special	\$124.00	\$134.00
.010"-.025"	Standard	\$98.00	\$113.00
	Special	\$104.00	\$119.00
.026"-.050"	Standard	\$111.00	\$139.00
	Special	\$117.00	\$145.00
.051"-.075"	Standard	\$123.00	\$161.00
	Special	\$130.00	\$167.00
.076"-.100"	Standard	\$136.00	\$180.00
	Special	\$142.00	\$186.00
.101"-.125"	Standard	\$146.00	\$199.00
	Special	\$153.00	\$205.00
.126"-.150"	Standard	\$156.00	\$215.00
	Special	\$162.00	\$221.00
.151"-.175"	Standard	\$166.00	\$227.00
	Special	\$173.00	\$234.00
.176"-.200"	Standard	\$175.00	\$238.00
	Special	\$181.00	\$244.00
.201"-.225"	Standard	\$183.00	\$245.00
	Special	\$189.00	\$251.00
.226"-.250"	Standard	\$189.00	\$250.00
	Special	\$196.00	\$257.00

NOTE: ADD 10% FOR COPPER BOND (RLE)

Prices subject to change without notice

Prices effective March 15, 2016

Visa/Mastercard Accepted



1A8 Flanges for 3" Thinwheel

A special Diacut flange must be used with the 3" Thinwheel

Part No.	Diameter	Wheel Exposure	Price
F1A8-385	2.85"	.075"	\$66
F1A8-370	2.70"	.150"	\$65
F1A8-355	2.55"	.225"	\$63
F1A8-340*	2.40"	.300"	\$62
F1A8-325*	2.25"	.375"	\$61
FS300	Complete Set of Flanges (5)		\$305

FLANGE THICKNESS FOR 3" THINWHEEL IS .400"

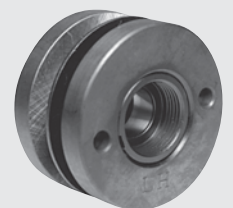
STANDARD HOLE SIZE FOR ALL FLANGES IS 1.25"

SPECIAL HOLE SIZE ADD \$10

WHEEL EXPOSURE NOT TO EXCEED 15 TIMES THE THICKNESS OF THE BLADE

WHEEL ADAPTERS

Keep grinding wheels mounted for longer wheel life and less dressing time.



WA200-1LH	Wheel Adapter O.D. 2-1/4"	\$53
*WAX200-1LH	Wheel Adapter O.D. 1-3/4"	\$95



P.O. Box 217, 773 Hwy 105, Palmer Lake, CO 80133

Phone: **719-481-4205**

Fax: 719-488-0872

Email: **sales@diacut.com**

Web: **www.diacut.com**

4" Diameter Series



RESIN BOND Diamond and CBN

SLOTTING • SLICING • DICING • CUT OFF

OUTSIDE DIAMETER: 4" INSIDE DIAMETER: 2.75"

Thinwheels available in thickness from .004" - .250" in increments of .001" or a fraction thereof.

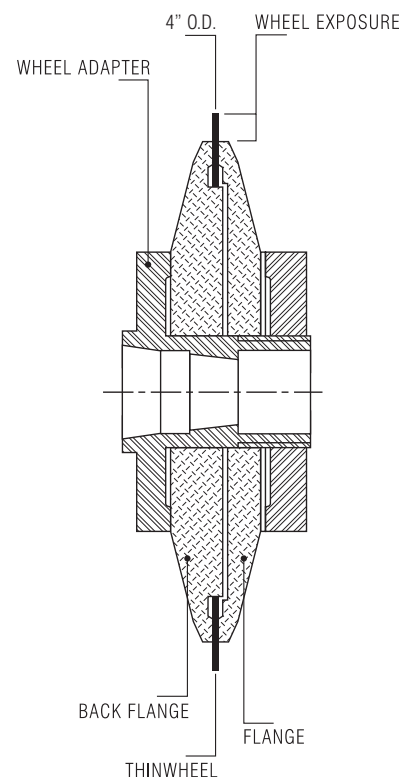
Thickness Tolerance: Standard $+.0/-0.0004$ Special $+.0/-0.0002$

SUPERABRASIVE SOLID TO HOLE

Wheel Thickness	Tolerance	Diamond	CBN
.004"-.006"	Special	\$131.00	NA
.007"-.009"	Standard	\$121.00	\$129.00
	Special	\$130.00	\$137.00
.010"-.025"	Standard	\$105.00	\$122.00
	Special	\$114.00	\$131.00
.026"-.050"	Standard	\$122.00	\$153.00
	Special	\$131.00	\$161.00
.051"-.075"	Standard	\$137.00	\$181.00
	Special	\$145.00	\$189.00
.076"-.100"	Standard	\$151.00	\$206.00
	Special	\$160.00	\$215.00
.101"-.125"	Standard	\$162.00	\$228.00
	Special	\$171.00	\$237.00
.126"-.150"	Standard	\$173.00	\$246.00
	Special	\$181.00	\$255.00
.151"-.175"	Standard	\$181.00	\$261.00
	Special	\$189.00	\$269.00
.176"-.200"	Standard	\$188.00	\$273.00
	Special	\$197.00	\$282.00
.201"-.225"	Standard	\$193.00	\$282.00
	Special	\$201.00	\$290.00
.226"-.250"	Standard	\$198.00	\$287.00
	Special	\$206.00	\$296.00

NOTE: ADD 10% FOR COPPER BOND (RLE)

Prices subject to change without notice
Prices effective March 15, 2016
Visa/Mastercard Accepted



1A8 Flanges for 4" Thinwheel

A special Diacut flange must be used with the 4" Thinwheel

Part No.	Diameter	Wheel Exposure	Price
F1A8-485	3.85"	.075"	\$84
F1A8-470	3.70"	.150"	\$83
F1A8-455	3.55"	.225"	\$82
F1A8-440	3.40"	.300"	\$81
F1A8-425	3.25"	.375"	\$80
FS400	Complete Set of Flanges (5)		\$399

FLANGE THICKNESS FOR 4" THINWHEEL IS .650"

STANDARD HOLE SIZE FOR ALL FLANGES IS 1.25"

SPECIAL HOLE SIZE ADD \$10

WHEEL EXPOSURE NOT TO EXCEED 15 TIMES THE THICKNESS OF THE BLADE

WHEEL ADAPTERS

Keep grinding wheels mounted for longer wheel life and less dressing time.



WA200-1LH	Wheel Adapter O.D. 2-1/4"	\$53
-----------	---------------------------	------



P.O. Box 217, 773 Hwy 105, Palmer Lake, CO 80133

Phone: **719-481-4205**

Fax: 719-488-0872

Email: **sales@diacut.com**

Web: **www.diacut.com**

5"

Diameter Series



RESIN BOND Diamond and CBN

SLOTING • SLICING • DICING • CUT OFF

OUTSIDE DIAMETER: 5" INSIDE DIAMETER: 3.5"

Thinwheels available in thickness from .004" - .250" in increments of .001" or a fraction thereof.

Thickness Tolerance: Standard $+.0/-0.0004$ Special $+.0/-0.0002$

SUPERABRASIVE SOLID TO HOLE

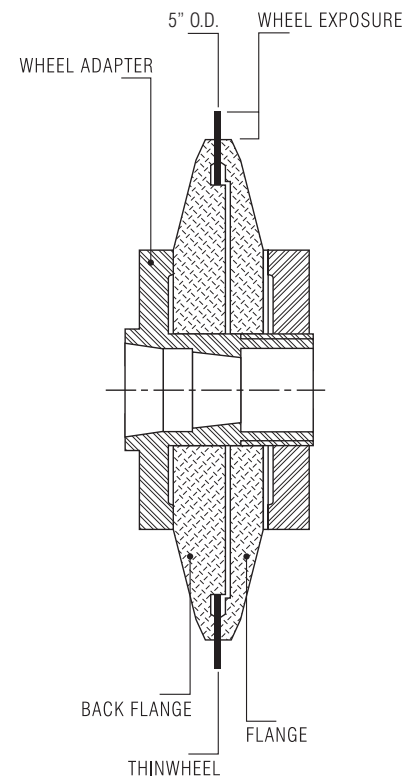
Wheel Thickness	Tolerance	Diamond	CBN
.004"-.006"	Special	\$137.00	NA
.007"-.009"	Standard	\$125.00	\$155.00
	Special	\$136.00	\$165.00
.010"-.025"	Standard	\$115.00	\$140.00
	Special	\$125.00	\$151.00
.026"-.050"	Standard	\$140.00	\$187.00
	Special	\$141.00	\$198.00
.051"-.075"	Standard	\$162.00	\$228.00
	Special	\$173.00	\$239.00
.076"-.100"	Standard	\$181.00	\$264.00
	Special	\$192.00	\$275.00
.101"-.125"	Standard	\$189.00	\$297.00
	Special	\$200.00	\$307.00
.126"-.150"	Standard	\$213.00	\$323.00
	Special	\$223.00	\$333.00
.151"-.175"	Standard	\$224.00	\$345.00
	Special	\$235.00	\$355.00
.176"-.200"	Standard	\$234.00	\$362.00
	Special	\$244.00	\$372.00
.201"-.225"	Standard	\$241.00	\$376.00
	Special	\$251.00	\$387.00
.226"-.250"	Standard	\$244.00	\$381.00
	Special	\$255.00	\$391.00

NOTE: ADD 10% FOR COPPER BOND (RLE)

Prices subject to change without notice

Prices effective March 15, 2016

Visa/Mastercard Accepted



1A8 Flanges for 5" Thinwheel

A special Diacut flange must be used with the 5" Thinwheel

Part No.	Diameter	Wheel Exposure	Price
F1A8-575	4.75"	.125"	\$95
F1A8-560	4.60"	.200"	\$91
F1A8-545	4.45"	.275"	\$89
F1A8-530	4.30"	.350"	\$87
F1A8-515	4.15"	.425"	\$84
F1A8-500	4.00"	.500"	\$82
FS500	Complete Set of Flanges (6)		\$492

FLANGE THICKNESS FOR 5" THINWHEEL IS .650"

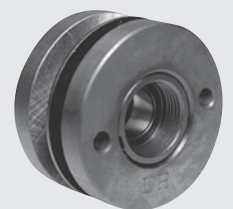
STANDARD HOLE SIZE FOR ALL FLANGES IS 1.25"

SPECIAL HOLE SIZE ADD \$10

WHEEL EXPOSURE NOT TO EXCEED 15 TIMES THE THICKNESS OF THE BLADE

WHEEL ADAPTERS

Keep grinding wheels mounted for longer wheel life and less dressing time.



WA200-1LH	Wheel Adapter O.D. 2-1/4"	\$53
-----------	---------------------------	------



P.O. Box 217, 773 Hwy 105, Palmer Lake, CO 80133

Phone: **719-481-4205**

Fax: 719-488-0872

Email: **sales@diacut.com**

Web: **www.diacut.com**

6"

Diameter Series



RESIN BOND Diamond and CBN

SLOTTING • SLICING • DICING • CUT OFF

OUTSIDE DIAMETER: 6" INSIDE DIAMETER: 4.5"

Thinwheels available in thickness from .004" - .250" in increments of .001" or a fraction thereof.

Thickness Tolerance: Standard $+.0/-0.0004$ Special $+.0/-0.0002$

SUPERABRASIVE SOLID TO HOLE

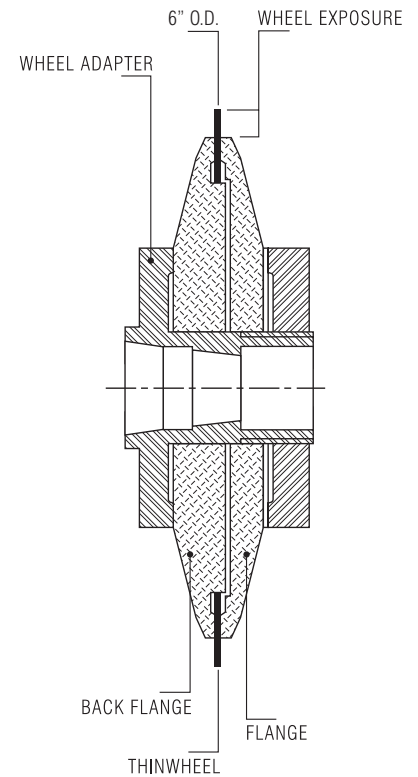
Wheel Thickness	Tolerance	Diamond	CBN
.004"-.006"	Special	\$150.00	NA
.007"-.009"	Standard	\$136.00	\$173.00
	Special	\$149.00	\$185.00
.010"-.025"	Standard	\$125.00	\$158.00
	Special	\$138.00	\$171.00
.026"-.050"	Standard	\$155.00	\$214.00
	Special	\$167.00	\$226.00
.051"-.075"	Standard	\$182.00	\$264.00
	Special	\$195.00	\$277.00
.076"-.100"	Standard	\$205.00	\$308.00
	Special	\$218.00	\$321.00
.101"-.125"	Standard	\$225.00	\$347.00
	Special	\$238.00	\$381.00
.126"-.150"	Standard	\$241.00	\$378.00
	Special	\$254.00	\$391.00
.151"-.175"	Standard	\$257.00	\$406.00
	Special	\$269.00	\$418.00
.176"-.200"	Standard	\$268.00	\$427.00
	Special	\$281.00	\$439.00
.201"-.225"	Standard	\$277.00	\$440.00
	Special	\$289.00	\$453.00
.226"-.250"	Standard	\$282.00	\$448.00
	Special	\$294.00	\$460.00

NOTE: ADD 10% FOR COPPER BOND (RLE)

Prices subject to change without notice

Prices effective March 15, 2016

Visa/Mastercard Accepted



1A8 Flanges for 6" Thinwheel

A special Diacut flange must be used with the 6" Thinwheel

Part No.	Diameter	Wheel Exposure	Price
F1A8-675	5.75"	.125"	\$114
F1A8-660	5.60"	.200"	\$112
F1A8-645	5.45"	.275"	\$110
F1A8-630	5.30"	.350"	\$108
F1A8-625	5.15"	.425"	\$105
F1A8-600	5.00"	.500"	\$103
FS600	Complete Set of Flanges (6)		\$618

FLANGE THICKNESS FOR 6" THINWHEEL IS .700"

STANDARD HOLE SIZE FOR ALL FLANGES IS 1.25"

SPECIAL HOLE SIZE ADD \$10

WHEEL EXPOSURE NOT TO EXCEED 15 TIMES THE THICKNESS OF THE BLADE

WHEEL ADAPTERS

Keep grinding wheels mounted for longer wheel life and less dressing time.



WA130-LH

Wheel Adapter O.D. 3"

\$145



P.O. Box 217, 773 Hwy 105, Palmer Lake, CO 80133

Phone: **719-481-4205**

Fax: 719-488-0872

Email: **sales@diacut.com**

Web: **www.diacut.com**

7"

Diameter Series

RB
RESIN
BOND

RESIN BOND Diamond and CBN

SLOTING • SLICING • DICING • CUT OFF

OUTSIDE DIAMETER: 7" INSIDE DIAMETER: 5.5"

Thinwheels available in thickness from .010" - .250" in increments of .001" or a fraction thereof.

Thickness Tolerance: Standard $+.0/-0.0004$ Special $+.0/-0.0002$

SUPERABRASIVE SOLID TO HOLE

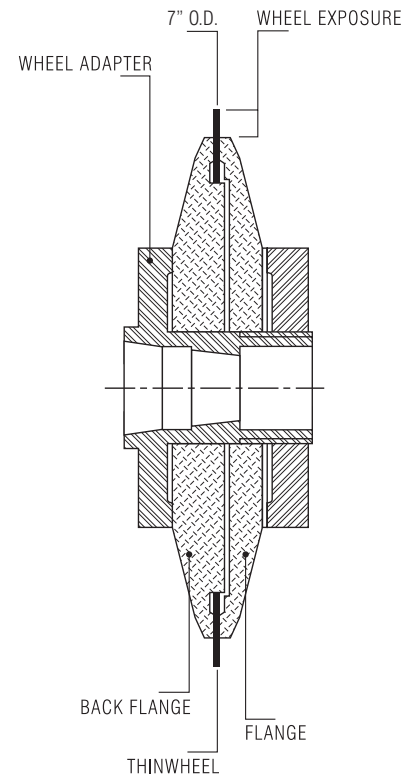
Wheel Thickness	Tolerance	Diamond	CBN
.010"-.025"	Standard	\$142.00	\$178.00
	Special	\$157.00	\$193.00
.026"-.050"	Standard	\$177.00	\$251.00
	Special	\$192.00	\$266.00
.051"-.075"	Standard	\$208.00	\$306.00
	Special	\$223.00	\$321.00
.076"-.100"	Standard	\$236.00	\$359.00
	Special	\$250.00	\$373.00
.101"-.125"	Standard	\$259.00	\$404.00
	Special	\$273.00	\$418.00
.126"-.150"	Standard	\$280.00	\$443.00
	Special	\$294.00	\$457.00
.151"-.175"	Standard	\$296.00	\$473.00
	Special	\$310.00	\$488.00
.176"-.200"	Standard	\$309.00	\$497.00
	Special	\$324.00	\$512.00
.201"-.225"	Standard	\$319.00	\$514.00
	Special	\$333.00	\$529.00
.226"-.250"	Standard	\$324.00	\$523.00
	Special	\$339.00	\$538.00

NOTE: ADD 10% FOR COPPER BOND (RLE)

Prices subject to change without notice

Prices effective March 15, 2016

Visa/Mastercard Accepted



1A8 Flanges for 7" Thinwheel

A special Diacut flange must be used with the 7" Thinwheel

Part No.	Diameter	Wheel Exposure	Price
F1A8-775	6.75"	.125"	\$142
F1A8-760	6.60"	.200"	\$139
F1A8-745	6.45"	.275"	\$136
F1A8-730	6.30"	.350"	\$133
F1A8-715	6.15"	.425"	\$130
F1A8-700	6.00"	.500"	\$126
FS700	Complete Set of Flanges (6)		\$756

FLANGE THICKNESS FOR 7" THINWHEEL IS .750"

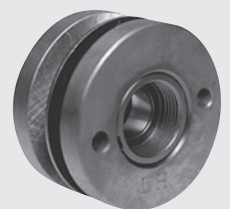
STANDARD HOLE SIZE FOR ALL FLANGES IS 1.25"

SPECIAL HOLE SIZE ADD \$10

WHEEL EXPOSURE NOT TO EXCEED 15 TIMES THE THICKNESS OF THE BLADE

WHEEL ADAPTERS

Keep grinding wheels mounted for longer wheel life and less dressing time.



WA130-LH

Wheel Adapter O.D. 3"

\$145



P.O. Box 217, 773 Hwy 105, Palmer Lake, CO 80133

Phone: **719-481-4205**

Fax: 719-488-0872

Email: **sales@diacut.com**

Web: **www.diacut.com**

8" Diameter Series



RESIN BOND Diamond and CBN

SLOTTING • SLICING • DICING • CUT OFF

OUTSIDE DIAMETER: 8" INSIDE DIAMETER: 6.5"

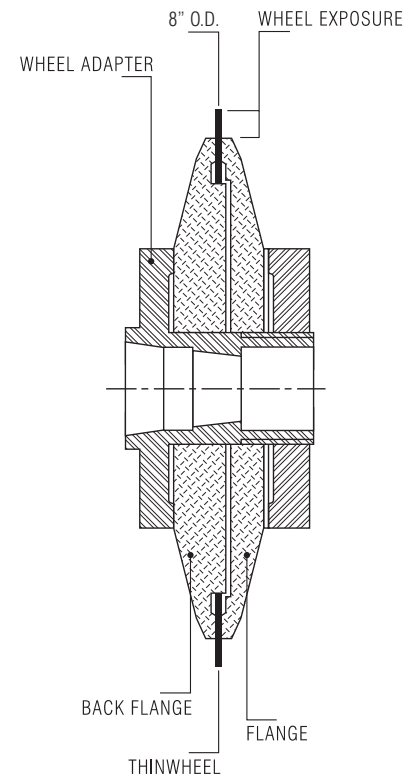
Thinwheels available in thickness from .010" - .250" in increments of .001" or a fraction thereof.

Thickness Tolerance: Standard $+0/-0.001"$ Special $+0/-0.0005"$

SUPERABRASIVE SOLID TO HOLE

Wheel Thickness	Tolerance	Diamond	CBN
.010"-.025"	Standard	\$168.00	\$210.00
	Special	\$183.00	\$227.00
.026"-.050"	Standard	\$198.00	\$278.00
	Special	\$215.00	\$294.00
.051"-.075"	Standard	\$234.00	\$347.00
	Special	\$250.00	\$364.00
.076"-.100"	Standard	\$265.00	\$408.00
	Special	\$282.00	\$425.00
.101"-.125"	Standard	\$292.00	\$460.00
	Special	\$309.00	\$477.00
.126"-.150"	Standard	\$315.00	\$504.00
	Special	\$332.00	\$521.00
.151"-.175"	Standard	\$334.00	\$540.00
	Special	\$351.00	\$557.00
.176"-.200"	Standard	\$349.00	\$567.00
	Special	\$366.00	\$584.00
.201"-.225"	Standard	\$360.00	\$586.00
	Special	\$376.00	\$603.00
.226"-.250"	Standard	\$368.00	\$597.00
	Special	\$387.00	\$614.00

NOTE: ADD 10% FOR COPPER BOND (RLE)



1A8 Flanges for 8" Thinwheel

A special Diacut flange must be used with the 8" Thinwheel

Part No.	Diameter	Wheel Exposure	Price
F1A8-875	7.75"	.125"	\$167
F1A8-860	7.60"	.200"	\$164
F1A8-845	7.45"	.275"	\$161
F1A8-830	7.30"	.350"	\$158
F1A8-815	7.15"	.425"	\$155
F1A8-800	7.00"	.500"	\$152
FS800	Complete Set of Flanges (6)		\$908

FLANGE THICKNESS FOR 8" THINWHEEL IS .800"

STANDARD HOLE SIZE FOR ALL FLANGES IS 1.25"

SPECIAL HOLE SIZE ADD \$10

WHEEL EXPOSURE NOT TO EXCEED 15 TIMES THE THICKNESS OF THE BLADE

Prices subject to change without notice
Prices effective March 15, 2016
Visa/Mastercard Accepted

WHEEL ADAPTERS

Keep grinding wheels mounted for longer wheel life and less dressing time.



WA130-LH	Wheel Adapter O.D. 3"	\$145
----------	-----------------------	-------



P.O. Box 217, 773 Hwy 105, Palmer Lake, CO 80133
 Phone: **719-481-4205**
 Fax: 719-488-0872
 Email: **sales@diacut.com**
 Web: **www.diacut.com**

10" Diameter Series



RESIN BOND Diamond and CBN

SLOTTING • SLICING • DICING • CUT OFF

OUTSIDE DIAMETER: 10" INSIDE DIAMETER: 8.5"

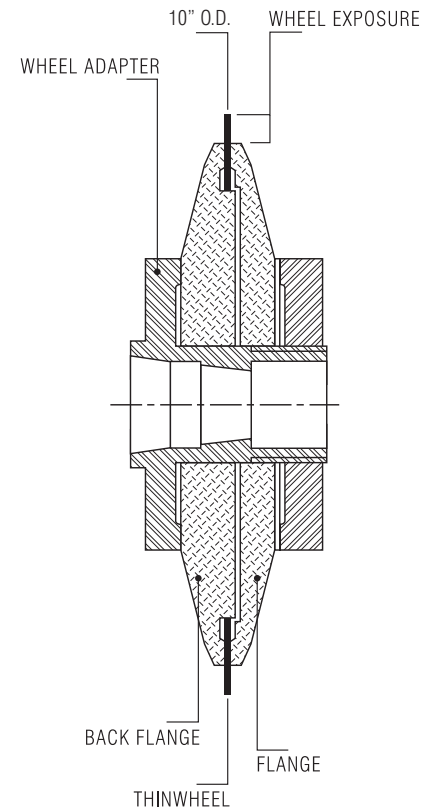
Thinwheels available in thickness from .010" - .250" in increments of .001" or a fraction thereof.

Thickness Tolerance: Standard $+.0/-0.001$ " Special $+.0/-0.0005$ "

SUPERABRASIVE SOLID TO HOLE

Wheel Thickness	Tolerance	Diamond	CBN
.010"-.025"	Standard	<i>on request</i>	
	Special	<i>on request</i>	
.026"-.050"	Standard	\$266.00	\$394.00
	Special	\$287.00	\$415.00
.051"-.075"	Standard	\$292.00	\$445.00
	Special	\$313.00	\$466.00
.076"-.100"	Standard	\$390.00	\$527.00
	Special	\$354.00	\$548.00
.101"-.125"	Standard	\$371.00	\$599.00
	Special	\$392.00	\$620.00
.126"-.150"	Standard	\$403.00	\$660.00
	Special	\$424.00	\$681.00
.151"-.175"	Standard	\$429.00	\$710.00
	Special	\$450.00	\$731.00
.176"-.200"	Standard	\$507.00	\$749.00
	Special	\$471.00	\$770.00
.201"-.225"	Standard	\$466.00	\$783.00
	Special	\$486.00	\$804.00
.226"-.250"	Standard	\$475.00	\$796.00
	Special	\$601.00	\$817.00

NOTE: ADD 10% FOR COPPER BOND (RLE)



1A8 Flanges for 10" Thinwheel

A special Diacut flange must be used with the 10" Thinwheel

Part No.	Diameter	Wheel Exposure	Price
F1A8-1075	9.75"	.125"	\$270.00
F1A8-1060	9.60"	.200"	\$265.00
F1A8-1045	9.45"	.275"	\$260.00
F1A8-1030	9.30"	.350"	\$255.00
F1A8-1015	9.15"	.425"	\$250.00
F1A8-1000	9.00"	.500"	\$245.00

FLANGE THICKNESS FOR 10" THINWHEEL IS 1"

STANDARD HOLE SIZE FOR ALL FLANGES IS 1.25"

SPECIAL HOLE SIZE ADD \$10

WHEEL EXPOSURE NOT TO EXCEED 15 TIMES THE THICKNESS OF THE BLADE

Prices subject to change without notice

Prices effective March 15, 2016

Visa/Mastercard Accepted

WHEEL ADAPTERS

Keep grinding wheels mounted for longer wheel life and less dressing time.

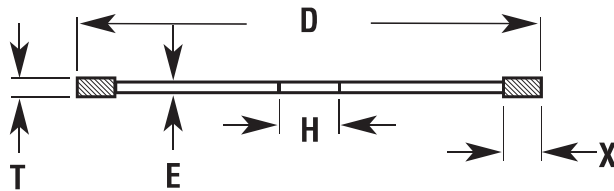




High Quality Diamond and CBN

CUT-OFF WHEELS - 1A1R

(Resin Bond/**Steel Core**)



PRICING

*Special Hole Size Add \$10 **Quantity Discounts Apply

D	T	E	X	H* Inch	H* mm	Price/Piece in US\$**	
						Diamond	CBN
3 inch	.032"	.020"	1/4"	N/A	10, 20	\$84	\$100
4 inch	.032"	.020"	1/4"	1 1/4	10, 20, 22, 30, 32	\$90	\$111
4 inch	.039"	.027"	1/4"	1 1/4	10, 20, 22, 30, 32	\$94	\$116
4 inch	.047"	.035"	1/4"	1 1/4	10, 20, 22, 30, 32	\$97	\$121
5 inch	.032"	.020"	1/4"	1 1/4	20, 22, 30, 32	\$100	\$126
5 inch	.039"	.027"	1/4"	1 1/4	20, 22, 30, 32	\$105	\$135
5 inch	.047"	.035"	1/4"	1 1/4	20, 22, 30, 32	\$112	\$142
6 inch	.032"	.020"	1/4"	1 1/4	20, 22, 30, 32	\$105	\$135
6 inch	.039"	.027"	1/4"	1 1/4	20, 22, 30, 32	\$111	\$145
6 inch	.047"	.035"	1/4"	1 1/4	20, 22, 30, 32	\$116	\$154
7 inch	.032"	.020"	1/4"	1 1/4	20, 22, 30, 32	\$115	\$152
7 inch	.039"	.027"	1/4"	1 1/4	20, 22, 30, 32	\$120	\$161
7 inch	.047"	.035"	1/4"	1 1/4	20, 22, 30, 32	\$125	\$168
8 inch	.032"	.020"	1/4"	1 1/4	20, 22, 30, 32	\$132	\$175
8 inch	.039"	.027"	1/4"	1 1/4	20, 22, 30, 32	\$135	\$178
8 inch	.047"	.035"	1/4"	1 1/4	20, 22, 30, 32	\$139	\$189
10 inch	.047"	.035"	1/4"	Hole size to specifications		\$200	\$233
10 inch	.062"	.047"	1/4"	Hole size to specifications		\$209	\$252
12 inch	.047"	.035"	1/4"	Hole size to specifications		\$247	\$283
12 inch	.062"	.047"	1/4"	Hole size to specifications		\$264	\$304

FLANGES

Standard Flange		Hole Reduction Flange	
Standard Hole Size 1 1/4"		Hole range 3/8" - 1 1/8", 10mm - 30mm	
3"	\$59	3"	\$70
3.5"	\$63	3.5"	\$75
4"	\$68	4"	\$78
4.5"	\$73	4.5"	\$83
5"	\$78	5"	\$89
5.5"	\$83	5.5"	\$94
6"	\$90	6"	\$100
7"	\$100	7"	\$111
8"	\$116	8"	\$126



Order Example:

Wheel type = 1A1R
D = 6"
T = .039"
H = 1.25"
Bond Type = 3DB-ROS1
Grit Size = 100/120 mesh
Grinding wet or dry?
Grinding what material?

Diamond/Bond Combinations:

1DB - ROS1: Medium Hard Bond- Free cutting, used on heat-sensitive materials as glass/quartz/ceramics etc.
2DB - ROS2: Nickel Coated Diamond, Hard Bond- Use only with ample coolant.
3DB - ROS1: Nickel Coated Diamond, Medium Hard Bond- Standard Cut-off for carbide wet or dry.
3D-100/120-ROS1-100 CON

CBN/Bond Combinations:

1CB - ROS1: Nickel Coated CBN, Medium Hard Bond- Used on ferrous material harder than 55 HRC, wet cutting only.
Standard cut-off:
1CB - 100/120 - ROS1 - 100 CON
2CB - ROS2: Nickel Coated CBN, Hard Bond- Used on ferrous material harder than 55 HRC. Recommended with straight oil coolant, automatic machining.

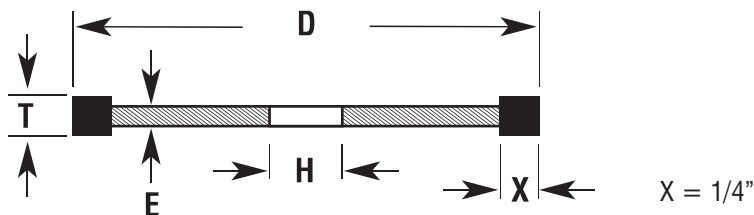
P.O. Box 217, 773 Hwy 105
Palmer Lake, CO 80133
Phone: **719-481-4205**
Fax: 719-488-0872
Email: sales@diacut.com
Web: www.diacut.com



1A1R (SPECIAL)

Heavy Duty Slot Grinding Wheels

Resin Bond/**Steel Core**



**Wheels Available in Thickness from
.032" - .375" in Increments of .001"
or a Fraction Thereof.**

DIAGRAM			WHEEL DIAMETER										
T	H		E	4"		5"		6"		7"		8"	
WHEEL THICKNESS	INCH	mm*	CORE THICKNESS	DIAMOND	CBN	DIAMOND	CBN	DIAMOND	CBN	DIAMOND	CBN	DIAMOND	CBN
.032 - .038	1 ¼"	32	.020	\$120	\$142	\$125	\$155	\$146	\$181	\$159	\$201	\$173	\$220
.039 - .046	1 ¼"	32	.027	\$125	\$151	\$132	\$163	\$152	\$191	\$165	\$210	\$177	\$229
.047 - .061	1 ¼"	32	.035	\$132	\$162	\$139	\$177	\$159	\$204	\$173	\$225	\$189	\$249
.062 - .086	1 ¼"	32	.050	\$145	\$182	\$155	\$202	\$175	\$233	\$191	\$258	\$207	\$284
.087 - .111	1 ¼"	32	.075	\$156	\$200	\$166	\$223	\$189	\$259	\$210	\$290	\$230	\$322
.112 - .136	1 ¼"	32	.100	\$165	\$217	\$179	\$244	\$204	\$283	\$225	\$318	\$246	\$352
.137 - .161	1 ¼"	32	.125	\$175	\$234	\$191	\$264	\$218	\$307	\$242	\$347	\$261	\$381
.162 - .186	1 ¼"	32	.150	\$185	\$249	\$201	\$282	\$230	\$329	\$258	\$372	\$254	\$415
.187 - .211	1 ¼"	32	.175	\$194	\$263	\$212	\$299	\$243	\$350	\$272	\$396	\$300	\$443
.212 - .236	1 ¼"	32	.200	\$202	\$277	\$222	\$315	\$256	\$369	\$284	\$417	\$313	\$466
.237 - .261	1 ¼"	32	.225	\$213	\$291	\$231	\$331	\$269	\$389	\$304	\$446	\$335	\$497
.262 - .325	1 ¼"	32	.250	\$231	\$325	\$251	\$369	\$293	\$435	\$331	\$499	\$366	\$557
.326 - .375	1 ¼"	32	.275	\$242	\$345	\$265	\$395	\$308	\$465	\$349	\$534	\$385	\$597

**THICKNESS TOLERANCE +.0/-.002" – 100 CONCENTRATION
MESH OR MICRON SIZE TO CUSTOMER SPECIFICATIONS**

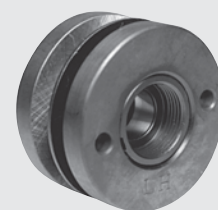
FLANGES

Standard Flange Standard hole size 1 1/4"		Hole Reduction Flange Hole range 3/8" - 1 1/8", 10mm - 30mm	
3"	\$59	3"	\$70
3.5"	\$63	3.5"	\$75
4"	\$68	4"	\$78
4.5"	\$73	4.5"	\$83
5"	\$78	5"	\$89
5.5"	\$83	5.5"	\$94
6"	\$90	6"	\$100

- Standard hold size is 1 1/4" or 32mm
- For larger hole size, add \$10
- For smaller hole size, use Hole Reduction Flange

GRINDING WHEEL ADAPTERS

Keep grinding wheels mounted for longer wheel life and less dressing time.



WA100 - 1LH	Wheel Adapter	\$72
WA200 - 1LH	Wheel Adapter	\$53

Information needed to order:

Diamond or CBN
Diameter and width of wheel
Wet or dry grinding (combination)
Mesh or micron size
Type of material grinding

P.O. Box 217, 773 Hwy 105

Palmer Lake, CO 80133

Phone: **719-481-4205** Fax: 719-488-0872

Email: **sales@diacut.com** Web: **www.diacut.com**

Prices subject to change without notice Prices effective March 15, 2016 Visa/Mastercard Accepted

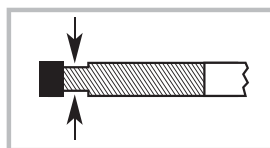
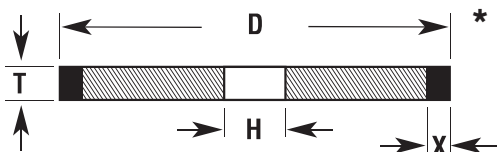
Call Rapp Industrial for your discounted pricing 724-789-7853 - 888-789-7288 Email us - sales@rappindustrialsales.com



1A1 PRECISION WHEELS

Resin Bond/**Abrasive Resin Core**

FLANGES ARE REQUIRED FOR SAFETY PURPOSES



X = 1/4"

Wheels Available in Thickness from .020" - .250" in Increments of .001" or a Fraction Thereof.

***Relief Available Upon Request – Add \$20**

DIAGRAM		WHEEL DIAMETER					
T	H	4"		5"		6"	
WHEEL THICKNESS	HOLE SIZE	DIAMOND	CBN	DIAMOND	CBN	DIAMOND	CBN
.020 - .050	1 1/4"	\$109	\$132	\$129	\$153	\$144	\$178
.051 - .075	1 1/4"	\$125	\$163	\$155	\$198	\$170	\$227
.075 - .100	1 1/4"	\$129	\$161	\$155	\$201	\$175	\$230
.101 - .125	1 1/4"	\$138	\$180	\$167	\$221	\$189	\$254
.126 - .150	1 1/4"	\$146	\$195	\$180	\$237	\$203	\$277
.151 - .175	1 1/4"	\$155	\$208	\$192	\$259	\$215	\$298
.176 - .200	1 1/4"	\$163	\$221	\$202	\$276	\$228	\$317
.201 - .225	1 1/4"	\$171	\$233	\$214	\$292	\$241	\$335
.226 - .250	1 1/4"	\$178	\$243	\$223	\$306	\$252	\$352

Information needed to order:

Diamond or CBN

Diameter and width of wheel

Wet or dry grinding (combination)

Mesh or micron size

Type of material grinding

THICKNESS TOLERANCE +.0/-.0005" – 100 CONCENTRATION MESH OR MICRON SIZE TO CUSTOMER SPECIFICATIONS

Any mesh or micron size available!

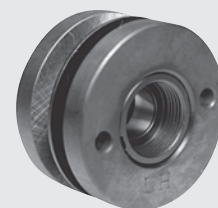
FLANGES

Standard Flange		Hole Reduction Flange	
Standard hole size 1 1/4"		Hole range 3/8" - 1 1/8", 10mm - 30mm	
3"	\$59	3"	\$70
3.5"	\$63	3.5"	\$75
4"	\$68	4"	\$78
4.5"	\$73	4.5"	\$83
5"	\$78	5"	\$89
5.5"	\$83	5.5"	\$94

- Standard hold size is 1 1/4" or 32mm
- For larger hole size, add \$10
- For smaller hole size, use Hole Reduction Flange

GRINDING WHEEL ADAPTERS

Keep grinding wheels mounted for longer wheel life and less dressing time.



WA100-1LH Wheel Adapter O.D. 2.25" \$72

P.O. Box 217, 773 Hwy 105
Palmer Lake, CO 80133

Phone: **719-481-4205** Fax: 719-488-0872

Email: **sales@diacut.com** Web: **www.diacut.com**

Prices subject to change without notice Prices effective March 15, 2016 Visa/Mastercard Accepted

Call Rapp Industrial for your discounted pricing 724-789-7853 - 888-789-7288 Email us - sales@rappindustrialsales.com



P.O. Box 217, 773 Hwy 105, Palmer Lake, CO 80133

Phone: 719-481-4205

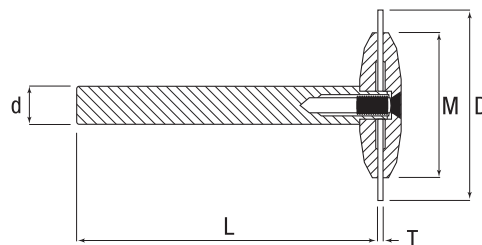
Fax: 719-488-0872

Email: sales@diacut.com

Web: www.diacut.com



REUSABLE MANDRELS AND THINWHEELS



Diamond & CBN Thinwheels

1/4" SHANK SERIES:

Thinwheels made to customer specified Wheel Diameter (D) x specified Wheel Thickness (T) x 3/16" Wheel I.D.

3/8" SHANK SERIES:

Thinwheels made to customer specified Wheel Diameter (D) x specified Wheel Thickness (T) x 1/4" Wheel I.D.

Wheel Diameter (D)	.625"-1.000"		1.250"		1.500"		2.000"		*2.500"	
Wheel Thickness (T)	Diamond	CBN	Diamond	CBN	Diamond	CBN	Diamond	CBN	Diamond	CBN
.006"-.010"	\$75.00	\$80.00	\$87.00	\$92.00	\$92.00	\$114.00	\$113.00	\$126.00	\$125.00	\$138.00
.011"-.015"	\$65.00	\$68.00	\$73.00	\$82.00	\$81.00	\$95.00	\$90.00	\$102.00	\$105.00	\$115.00
.016"-.025"	\$56.00	\$59.00	\$63.00	\$71.00	\$70.00	\$82.00	\$78.00	\$88.00	\$91.00	\$100.00
.026"-.050"	\$58.00	\$63.00	\$67.00	\$74.00	\$75.00	\$85.00	\$86.00	\$98.00	\$97.00	\$113.00
.051"-.075"	\$60.00	\$68.00	\$70.00	\$80.00	\$79.00	\$92.00	\$93.00	\$113.00	\$101.00	\$124.00
.076"-.100"	\$63.00	\$72.00	\$73.00	\$87.00	\$84.00	\$101.00	\$99.00	\$125.00	\$107.00	\$126.00

Thickness tolerance: +0/-.0005"

*only available for 3/8" Shank Series

Reusable Mandrels

1/4" Shank Series (d)
ALSO AVAILABLE IN 6mm

Part No.	M	L	Price
RM750-1/4	.750"	2"	\$49.00
RM625-1/4	.625"	2"	\$49.00
RM500-1/4	.500"	2"	\$49.00
RM375-1/4	.375"	2"	\$49.00

3/8" Shank Series (d)
ALSO AVAILABLE IN 10mm

Part No.	M	L	Price
RM1500-3/8	1.500"	3"	\$59.00
RM1250-3/8	1.250"	3"	\$59.00
RM1000-3/8	1.000"	3"	\$59.00
RM750-3/8	.750"	3"	\$59.00

Specify left- or right-hand capscrew